



This project is an EU funded project

Social Agencies for Future Europe



SAFE

EUROPEAN COMMISSION
DG Employment, Social Affairs and Inclusion
Employment and Social Legislation, Social Dialogue
Free Movement of Workers Coordination of Social Security Schemes

EUROPEAN COMMISSION

Social Agency for Future Europe

2014
Inclusion

DG Employment, Social Affairs and

DISCLAIMER

This Brochure has been delivered with EU support.
The brochure content is an exclusive responsibility of SAFE Consortium.

S.A.F.E. “Social Agencies For Future Europe”



On August 9th, **INPS**, as leading Institute of a consortium composed by 13 social security agencies, presented Project S.A.F.E. for the Call “EESSI Pool of Excellence”, a 4-years framework agreement.

11 countries are represented in the consortium, and these social agencies deliver services to **a 300+ M population** that corresponds to about **60% of European citizens and workers**. Additionally, being a geographically diverse set of Member State agencies, it ensures a large variety of different social and demographic models can be addressed.

EESSI is a complex project spanning over 30 countries. Expertise is fragmented and it is difficult to share experience and issues

across country boundaries. By bringing together a diverse group of Member State agencies, supported by key external contractors, we will be able to work across these boundaries to provide both advice and guidance on implementation issues, and also to facilitate exchange of ideas and best practice.

S.A.F.E. main objective is to ensure that **ALL Member State agencies have the opportunity to share their views, share their experiences and benefit from the experience of others.**

By the end of the first year of SAFE Project is expected to:

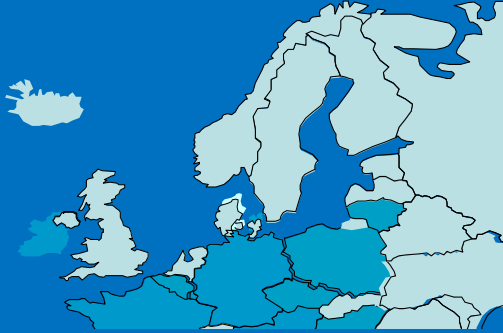
- 1. Set-up all necessary methodology, coordination and tools to support 4 years of Activities with the 12 collaborating Agency**
- 2. Produce concrete and tangible results for testing and piloting in Work Package 3 and Work Package 5 Business Modeling, with effective and meaningful to share with all MS to support EESSI development**
- 3. Contribute substantially to added value and relevance at European level of the activities proposed as well as their dissemination and availability to all countries involved in EESSI, also including consultation and questionnaires for all MS**
- 4. Create a collaborative and supportive relationship of long term vision with EU EESSI Commission in order**

to maximize communication, reuse of results and in general benefit for the EESSI programme

EC DG EMPLOY that has published on June the 2013 the EESSI Pool of excellence Call for Proposal requiring a Consortium composed by 10 EU Member States at least for a period of 4 years and 10 Million of EU funding. The S.A.F.E. proposal has been signed on September 2013 and the Consortium is composed by:

Acronyms	Country	Institution
INPS	ITA	National Welfare Agency
CLEISS	FR	French Centre for European and International Liaisons for Social Security
CSSA	CZ	Czech Social Security Administration
DRV BUND	DE	German Pension Fund
DSP	IE	Department of Social Protection
DVKA	DE	National Association Health Insurance Funds, German Liaison Agency Health Insurance – International
HVOS	AT	Main Association of Austrian Social Security Institutions
INAIL	ITA	National Institute for Insurance against Work Accidents
NFZ	PL	National Health Fund
NORSA	HU	National Office for Rehabilitation and Social Affairs
NSSI	BG	National Social Security Institute
SODRA	LT	State Social Insurance Fund Board Under the Ministry of Social Security and Labor of Lithuania
SVB	NL	Social Insurance Bank

S.A.F.E. and E.E.S.S.I.



EESSI Program is an historical European Project **focused on data exchange and technology enablement:**

EESSI: Electronic Exchange of Social Security Information

The EU Citizenship legal framework is under discussion since a long time: Regulatory (CE) n. 987/2009 EU parliament, (CE) n. 883/2004 social security coordination; Reg (CE) n. 988/2009 of EU parliament

Article 78 of Regulation 883/2004

"MS shall progressively use new technologies for the exchange, access and processing of the data required to apply the Regulations.

The Commission shall lend its support."

Article 4(2) of Reg. 987/2009

*"The transmission of data between the institutions or the liaison bodies **shall be carried out by electronic means** either directly or indirectly through the access points under a **common secure framework** that can guarantee the confidentiality and protection of exchanges of data."*

EESSI is a complex and ambitious program that has a long history, and that has deep impact also on legal aspects and the organization.

From a **legal perspective** the correct application of principles:

Only one legislation applicable

Equality of treatment

Export of cash benefits

Aggregation of insurance periods

and the **Organization & Cooperation perspective,**

Citizens well informed about their rights

Good cooperation between Member States

Efficient mechanism of administrative cooperation between institutions

The delays and changes to the EESSI system have left Member State's agencies uncertain on the real objectives and benefits. A key part of the project will be devoted to reverse that situation by showing Member State agencies how best to integrate EESSI into their existing processes effectively and at the lowest cost. To do this, Member State agencies require support with:

- Technical integration of EESSI with legacy systems;
- Best practice processes;
- Financial benefit cases to support EESSI implementation;
- Added value services to enhance and extend EESSI;
- Processes to capture common issues, benefits and learning.

EESSI is a complex project spanning over 30 countries. Expertise is fragmented and it is difficult to share experience and issues across country boundaries. By bringing together a diverse group of Member State agencies S.A.F.E. will be able to work across these boundaries to provide both advice and guidance on implementation issues, and also to facilitate exchange of ideas and best practice.

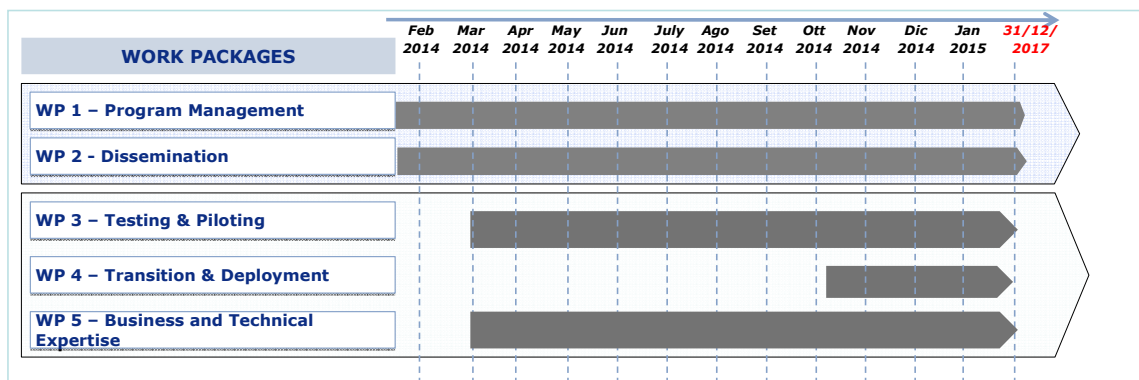
INPS has proposed the SAFE Project (Social Agencies for Future Europe) as leading partner of 11 countries and 13 Welfare Agencies, covering about the 60% of EU population.

While all Member State agencies will have specific local issues in deploying EESSI over the next few years, there are also many

common problems where solutions can be found in one agency and exploited by others. Creating a network of expertise under this framework will allow this to happen.

Additionally, the Consortium will be able to provide an aggregation point for common problems across Member State agencies of all sizes, particularly with “on the ground” issues in preparing for deployment, and also around actual deployment problems.

S.A.F.E. Work Packages



The activities will be managed with 4 work packages.





In **WP 1-Project Management INPS will provide overall coordination for the Start-up for the Consortium both in terms of methodologies, quality plan as for tools** (internal portal, collaboration). This effort is required at the beginning of SAFE projects and will set up the basis of an efficient day-by-day project management that will be delivered during all the 4 years of

establishment. Therefore, in the first year of activities is required an additional effort/cost of start-up that will be sustaining all four years of activities, but when all project management activities will be properly delivered as day-by-day and tailored and experienced approach, the effort and cost of project management is expected to flat on the next years and coherent with an on going activity in terms of solution/effort. **WP 2 – Dissemination is devoted in 2014 to set-up tools for the large scale dissemination activities as SAFE Project Web Site, that will be updated for all the 4 years of establishment and a Capital Seminar will be organized in order to disseminate to all EU MS SAFE results.** As in 2014 the Transport and Message infrastructure will be selected and provided by EU, 2014 is the first running year for **WP 3 Test & Pilot, SAFE project will propose a structured approach, in a 360 degree approach comprehensive of Business Modelling delivered in WP 5.** In order to maximise EU MS engagement, **Reflection paper in WP 3 and WP 5 will include proper questionnaires for MS and consultation interlocks.**

S.A.F.E. Consortium

	<p>INPS National Welfare Agency</p>	<p>www.inps.it</p>	<p>Italy</p> 
	<p>CLEISS French Centre for European and International Liaisons for Social Security</p>	<p>www.cleiss.fr</p>	<p>France</p> 
	<p>CSSA Czech Social Security Administration</p>	<p>http://www.cssz.cz/en/about-cssa/</p>	<p>Czech Republic</p> 
	<p>DVR BUND German Pension Fund</p>	<p>www.deutsche- rentenversicher- ung.de</p>	<p>Germany</p> 
	<p>DSP Department of Social Protection</p>	<p>www.welfare.ie</p>	<p>Ireland</p> 

	<p>DVKA National Association Health Insurance Funds, German Liaison Agency Health Insurance – International</p>	<p>www.dvka.de</p>	<p>Germany </p>
	<p>HVOS Main Association of Austrian Social Security Institutions</p>	<p>www.sozialversicherung.at</p>	<p>Austria </p>
	<p>INAIL National Institute for Insurance against Work Accidents</p>	<p>www.inail.it</p>	<p>Italy </p>
	<p>NFZ National Health Fund</p>	<p>www.nfz.gov.pl</p>	<p>Poland </p>
	<p>NORSA National Office for Rehabilitation and Social Affairs</p>	<p>http://norsa.gov.hu</p>	<p>Hungary </p>
	<p>NSSI National Social Security Institute</p>	<p>www.noi.bg/en</p>	<p>Bulgaria </p>

	<p>SODRA State Social Insurance Fund Board Under the Ministry of Social Security and Labor of Lithuania</p>	<p>www.sodra.lt/en</p>	<p>Lithuania</p> 
	<p>SVB Social Insurance Bank</p>	<p>www.svb.nl</p>	<p>Netherlands</p> 

European Commission
Employment, Social Affairs and Inclusion